



Sachfield Drive, Chafford Hundred, Grays

£1,400 pcm

Ali & Co are delighted to present this fantastic TWO BEDROOM TOP FLOOR APARTMENT with secure gated parking, Located in the ever popular Chafford Hundred Estate.

Available to view now | Two Bedroom Apartment | Allocated parking | Double Glazing | Gas Central Heating | Large Double Room | Secure Gated parking | In High Demand |

01375 806786

hello@aliandcoproperty.co.uk

Ali&Co
PROPERTY SERVICES

STUNNING TWO BEDROOM APARTMENT

Ali & Co are delighted to present this fantastic TWO BEDROOM TOP FLOOR APARTMENT with secure gated parking, Located in the ever popular Chafford Hundred Estate.

The property offers excellent accommodation with Two great size bedrooms, family bathroom separate kitchen and a spacious lounge, in great decorative order, the property is also offered with whitegoods and benefits from secure gated parking allocated.

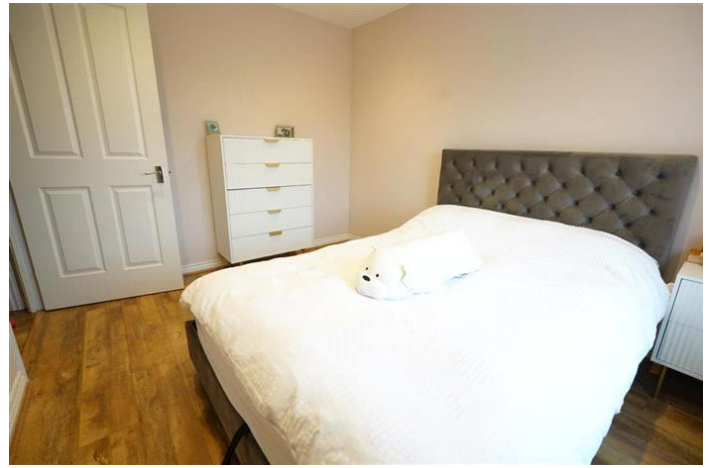
Prime area of residence in Chafford Hundred surrounded by nature, gorges and walking areas.

Internal viewings highly recommended please contact Ali & co to book a viewing immediately.

Council Tax Band: C (Thurrock Council)


Deposit: £1,400

Parking options: Residents







Energy Efficiency Rating		
	Current	Potential
Very energy efficient - lower running costs		
(92-100) A		
(81-91) B		
(69-80) C	76	78
(55-68) D		
(39-54) E		
(21-38) F		
(1-20) G		
Not energy efficient - higher running costs		
England & Wales	EU Directive 2002/91/EC 	

The energy efficiency rating is a measure of the overall efficiency of a home. The higher the rating the more energy efficient the home is and the lower the fuel bills will be.

Whilst every effort is made to ensure the accuracy of these details, it should be noted that the measurements are approximate only. Floorplans are for representation purposes only and prepared according to the RICS Code of Measuring Practice by our floorplan provider. Therefore, the layout of doors, windows and rooms are approximate and should be regarded as such by any prospective tenant.