



The White Hart, Kings Walk, Grays

£50,000 pa

LET AGREED

Ali & Co are delighted to offer for lease this iconic property located by Grays High Street and train station.

Formally known as the Whitehart Pub.

A3 Business | Available Now | Close To Station | Close To Town | High Street Location | Large Space | Off-street parking | Basement and Ground Floor |

01375 806786

hello@aliandcoproperty.co.uk

Ali&Co
PROPERTY SERVICES

Large Commercial To Let

Ali & Co are delighted to offer for lease this iconic property located by Grays High Street and train station.
Formally known as the Whitehart Pub.

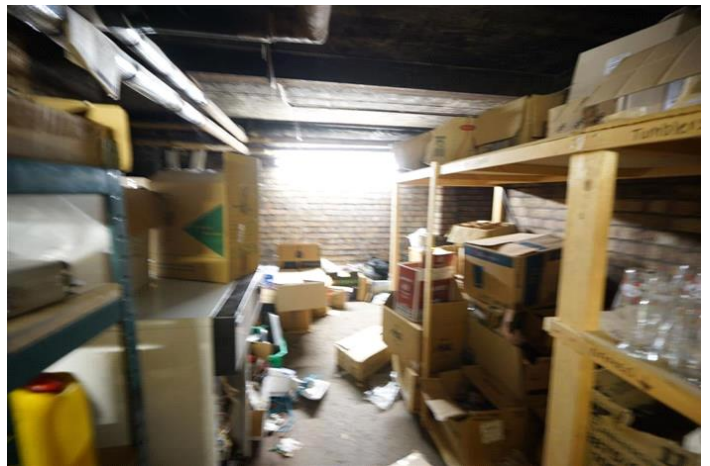
The premises offers large trading area
Ground Floor gross internal area = 2,881 sq ft / 268 sq m
Cellar gross internal area = 1,626 sq ft / 151 sq m

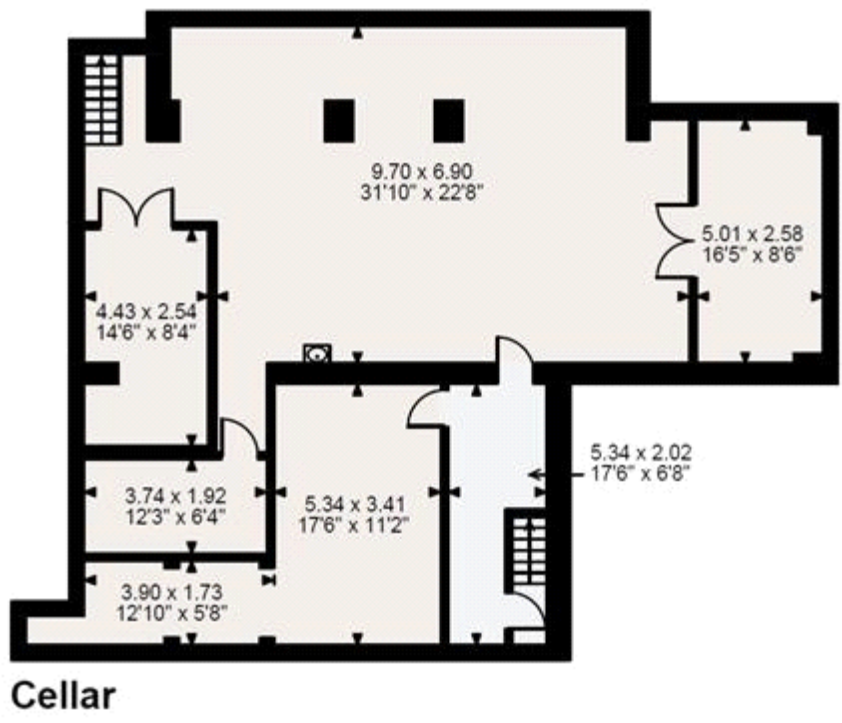
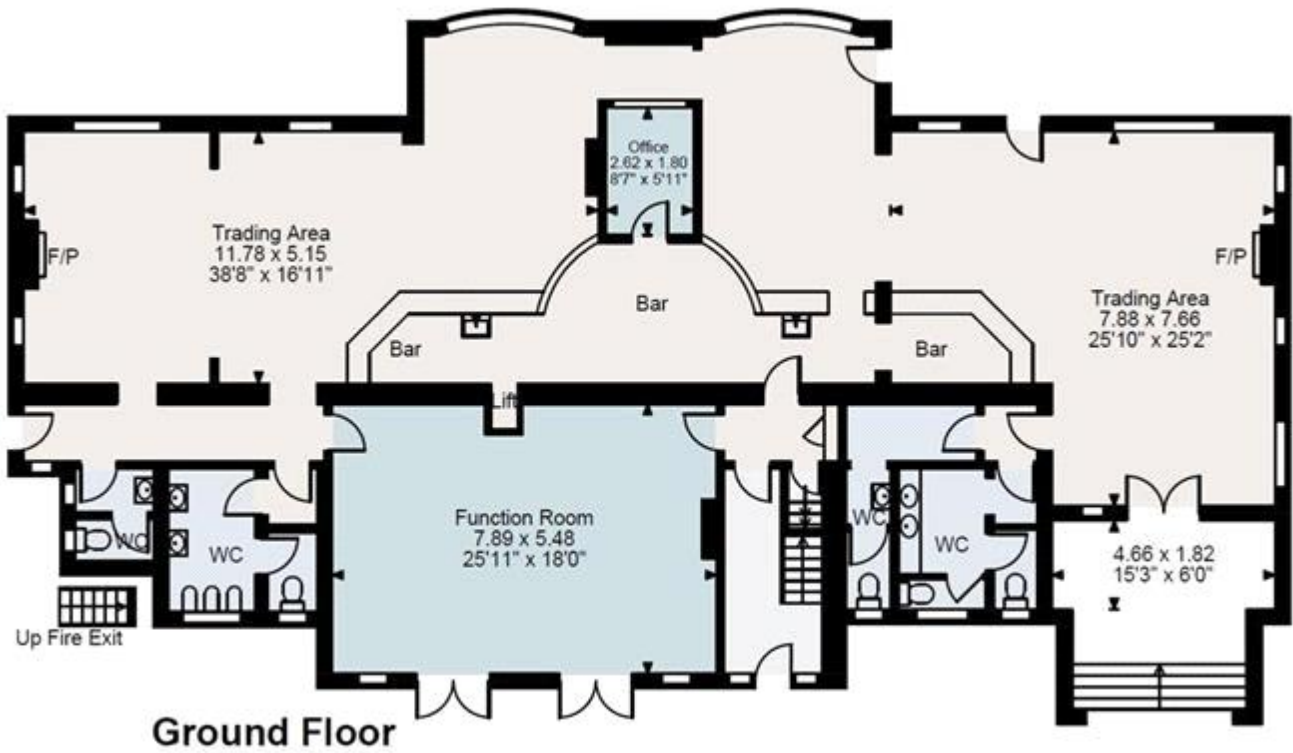
This would suit a business looking to use as its current use, Off License or Restuarant.

Internal viewings highly recommended.

Deposit: £8,333.33







Whilst every effort is made to ensure the accuracy of these details, it should be noted that the measurements are approximate only. Floorplans are for representation purposes only and prepared according to the RICS Code of Measuring Practice by our floorplan provider. Therefore, the layout of doors, windows and rooms are approximate and should be regarded as such by any prospective tenant.