



## Flat , Witham House, Schoolfield Way, Grays

£1,500 pcm

**LET**

Ali & Co are delighted to offer this fantastic TWO DOUBLE BEDROOM GROUND FLOOR APARTMENT To Let.

Located in West Thurrock a prime location close to Lakeside Shopping Centre and transport links.

Close to Lakeside | Close to schools | Ground Floor | Two Bedroom Apartment | Available to view now | Double Bedrooms | Allocated parking |

**01375 806786**

hello@aliandcoproperty.co.uk

**Ali&Co**  
PROPERTY SERVICES

## LUXURY TWO BEDROOM APARTMENT

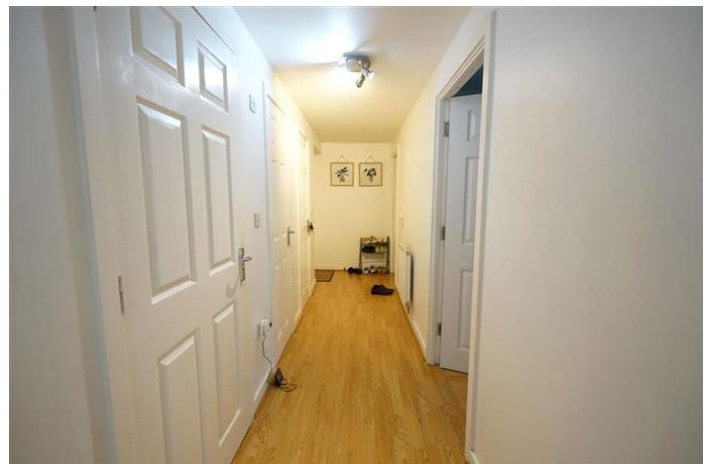
Ali & Co are delighted to offer this fantastic TWO DOUBLE BEDROOM GROUND FLOOR APARTMENT To Let. Located in West Thurrock a prime location close to Lakeside Shopping Centre and transport links.

The property offers excellent accomodation with Two Double Bedrooms, Open plan modern kitcehn and lounge with access to balcony, Family bathroom and long hallway with ample storage space.

A fantastic commuter location with access to all local amenties and transport.

Internal viewings highly recommened.  
Call Ali & Co to book your viewing today!

Council Tax Band: C (Thurrock Council)  
Deposit: £1,400







Energy Efficiency Rating		
	Current	Potential
Very energy efficient - lower running costs		
(92-100) <b>A</b>		
(81-91) <b>B</b>		
(69-80) <b>C</b>	<b>75</b>	<b>78</b>
(55-68) <b>D</b>		
(39-54) <b>E</b>		
(21-38) <b>F</b>		
(1-20) <b>G</b>		
Not energy efficient - higher running costs		
<b>England &amp; Wales</b>	EU Directive 2002/91/EC	

The energy efficiency rating is a measure of the overall efficiency of a home. The higher the rating the more energy efficient the home is and the lower the fuel bills will be.

Whilst every effort is made to ensure the accuracy of these details, it should be noted that the measurements are approximate only. Floorplans are for representation purposes only and prepared according to the RICS Code of Measuring Practice by our floorplan provider. Therefore, the layout of doors, windows and rooms are approximate and should be regarded as such by any prospective tenant.