



## The White Hart, Kings Walk, Grays

£700 pcm

**LET**

Ali & Co are delighted to present this unique Co-Living home situated within walking distance of Grays Town Centre. a choice of 6 bedrooms.

6 Bedrooms | All Bills Included | Available Now | Close to town centre | Co Living Home | Double Glazing | Ensuite Bathroom | Free WIFI | Fully Fitted Kitchen | Gas Central Heating | High Ceilings | House Share | Large Double Room |

**01375 806786**

hello@aliandcoproperty.co.uk

**Ali&Co**  
PROPERTY SERVICES

## Great Co-Living Home in Grays

Ali & Co are delighted to present this unique Co-Living home situated within walking distance of Grays Town Centre. a choice of 6 bedrooms. The property offers fantastic living with shared facilities large spacious rooms.

A short walk to all amenities and transport located by the riverside.

All bills included

The rooms offer comfortable living with furniture.  
Available to view immediately call now to arrange a viewing

Deposit: £800

Parking options: Off Street

Garden details: Private Garden

### Bedroom 1

Large ensuite room with share of kitchenette £825

### Bedroom 2

Large ensuite bedroom with share of kitchenette £825 pcm

### Bedroom 3

Large double bedroom with shared facilities £750 pcm

### Bedroom 4

Large double bedroom with shared facilities £750 pcm

### Bedroom 5

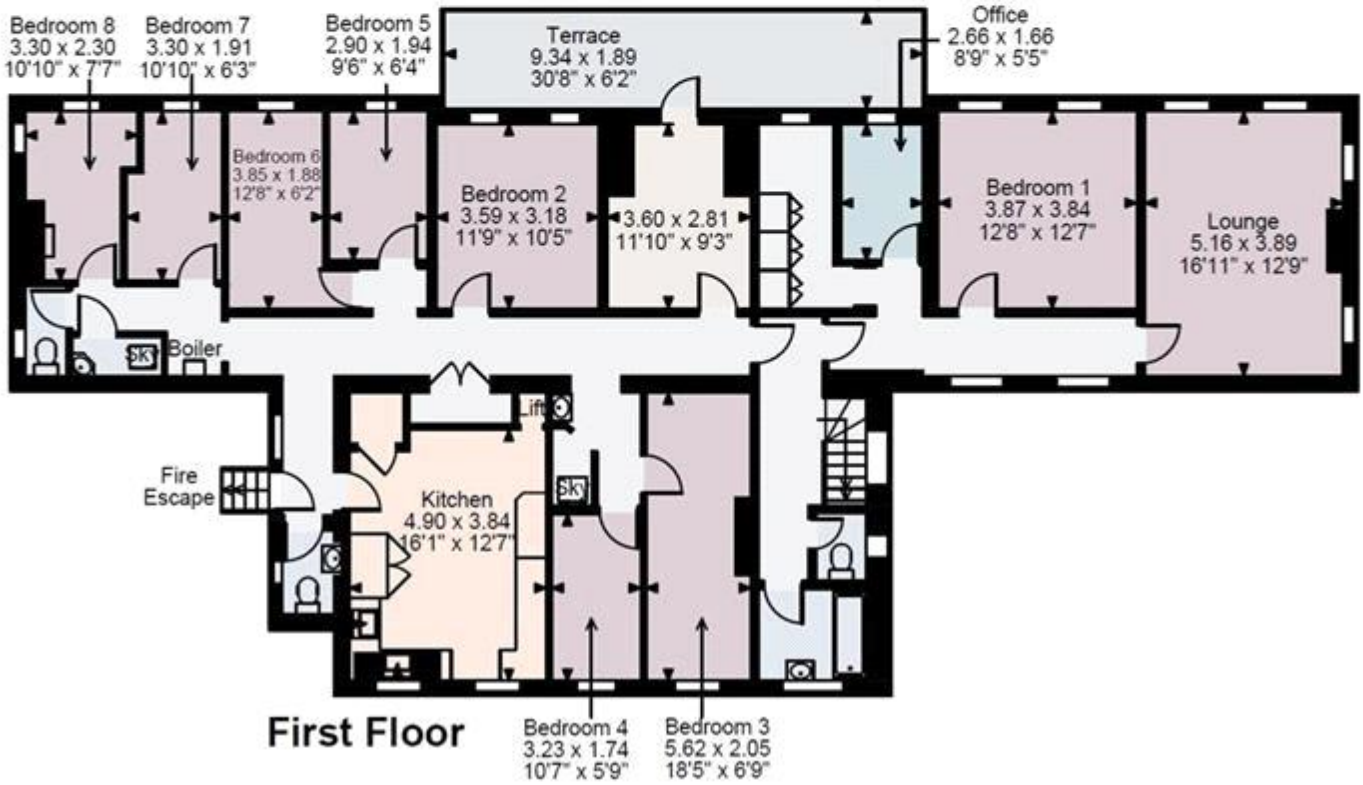
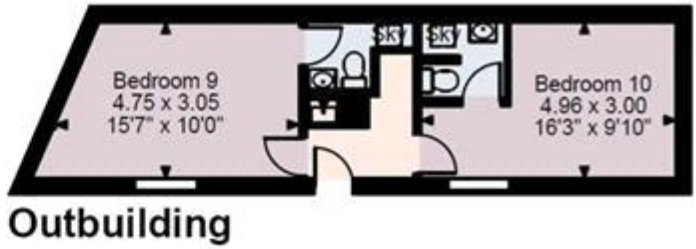
Single bedroom with shared facilities £700 pcm

### Bedroom 6

Single bedroom with shared facilities £700 pcm







Energy Efficiency Rating		
	Current	Potential
Very energy efficient - lower running costs		
(92-100) <b>A</b>		
(81-91) <b>B</b>		
(69-80) <b>C</b>	<b>80</b>	
(55-68) <b>D</b>		
(39-54) <b>E</b>		
(21-38) <b>F</b>		
(1-20) <b>G</b>		
Not energy efficient - higher running costs		
<b>England &amp; Wales</b>	EU Directive 2002/91/EC	

The energy efficiency rating is a measure of the overall efficiency of a home. The higher the rating the more energy efficient the home is and the lower the fuel bills will be.

Whilst every effort is made to ensure the accuracy of these details, it should be noted that the measurements are approximate only. Floorplans are for representation purposes only and prepared according to the RICS Code of Measuring Practice by our floorplan provider. Therefore, the layout of doors, windows and rooms are approximate and should be regarded as such by any prospective tenant.