



Rosedale Road, Grays

£1,795 pcm

LET

Ali & Co are delighted to have on offer this fantastic FOUR BEDROOM FAMILY HOME WITH TWO RECEPTION ROOMS, Available immediately.

Available Now | Close to Lakeside | Close to schools | Close To Station | Double Glazing | Four Bedroom House | Garden | Gas Central Heating |

01375 806786

hello@aliandcoproperty.co.uk

Ali&Co
PROPERTY SERVICES

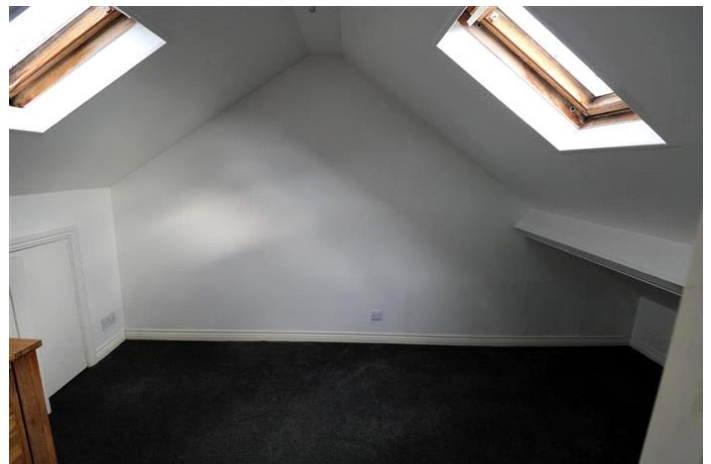
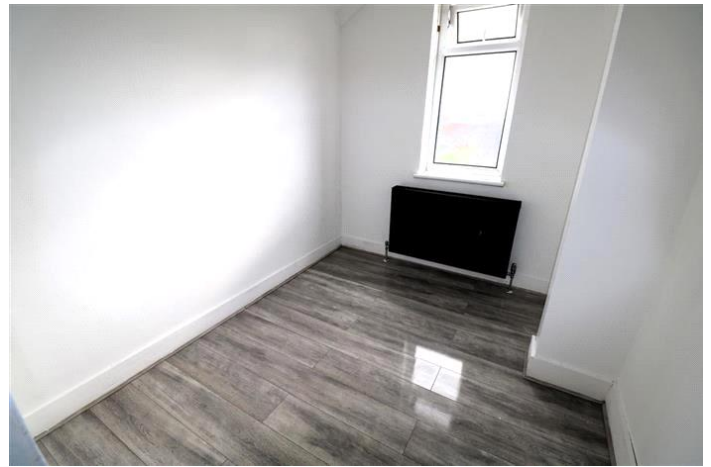
FOUR BEDROOM FAMILY HOME

The property offers excellent accommodation with two reception rooms, fitted kitchen, ground floor bathroom, access to a low maintenance garden, 3 bedrooms and a WC on the first floor with a converted loft room as the fourth.

Internal viewings highly recommended.

Council Tax Band: C (Thurrock Council)

Deposit: £1,795







Energy Efficiency Rating		
	Current	Potential
Very energy efficient - lower running costs		
(92-100) A		
(81-91) B		88
(69-80) C		
(55-68) D	62	
(39-54) E		
(21-38) F		
(1-20) G		
Not energy efficient - higher running costs		
England & Wales	EU Directive 2002/91/EC	

The energy efficiency rating is a measure of the overall efficiency of a home. The higher the rating the more energy efficient the home is and the lower the fuel bills will be.

Whilst every effort is made to ensure the accuracy of these details, it should be noted that the measurements are approximate only. Floorplans are for representation purposes only and prepared according to the RICS Code of Measuring Practice by our floorplan provider. Therefore, the layout of doors, windows and rooms are approximate and should be regarded as such by any prospective tenant.