



Ruskin Road, Grays

£385,000 Freehold

SOLD

Ali & Co are delighted to present this extended THREE BEDROOM SEMI DETACHED FAMILY HOME, With new contemporary kitchen, and many more features.

100ft Garden | Close to schools | Close to Town Centre | Driveway | New Kitchen | Three Bedrooms | Office | Extended | Semi Detached House |

01375 806786

hello@aliandcoproperty.co.uk

Ali&Co
PROPERTY SERVICES

THREE BEDROOM FAMILY HOME

Ali & Co are delighted to present this extended THREE BEDROOM SEMI DETACHED FAMILY HOME, With new contemporary kitchen, and many more features.

The property offers excellent accommodation with Two double bedrooms a single bedroom, family bathroom, great size lounge extending into a office, modern contemporary kitchen newly installed with access to dining area.

100ft garden space, driveway for upto 3 cars and ample parking a the front of the property, the property also benefits from full exterior insulation and loft insulation.

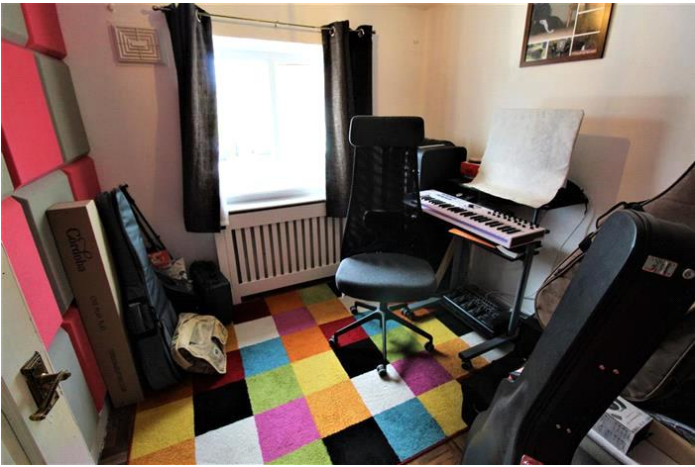
A fantastic property situated in a great location, within easy access of all local amenities and transport.

Available to view now

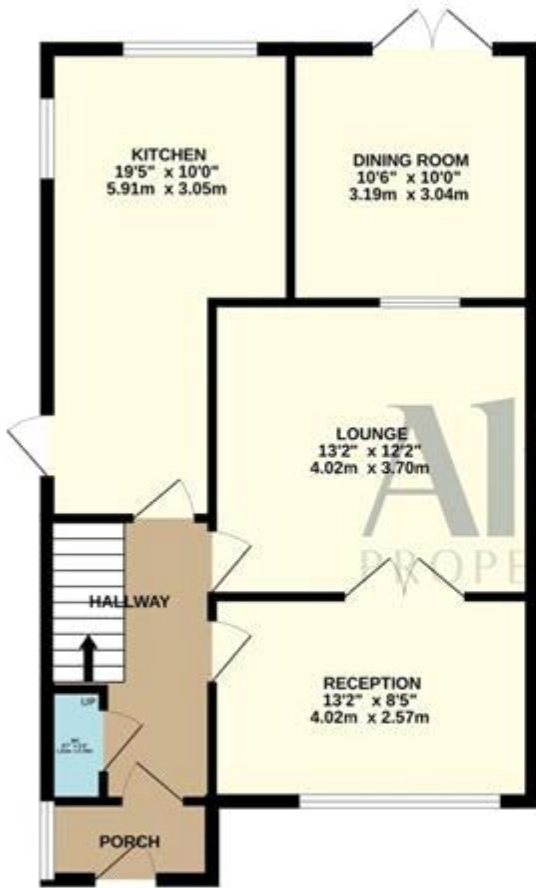
Council Tax Band: C (Thurrock Council)

Tenure: Freehold





GROUND FLOOR
642 sq.ft. (59.7 sq.m.) approx.



1ST FLOOR
411 sq.ft. (38.2 sq.m.) approx.



TOTAL FLOOR AREA : 1053 sq.ft. (97.8 sq.m.) approx.

Whilst every attempt has been made to ensure the accuracy of the floorplans contained here, measurements of doors, windows, rooms and any other items are approximate and no responsibility is taken for any error, omission or mis-statement. This plan is for illustrative purposes only and should be used as such by any prospective purchaser. The services, systems and appliances shown have not been tested and no guarantee as to their operability or efficiency can be given.
Made with Metropix ©2023



Energy Efficiency Rating		
	Current	Potential
Very energy efficient - lower running costs		
(92-100) A		
(81-91) B		85
(69-80) C	70	
(55-68) D		
(39-54) E		
(21-38) F		
(1-20) G		
Not energy efficient - higher running costs		
England & Wales	EU Directive 2002/91/EC	

The energy efficiency rating is a measure of the overall efficiency of a home. The higher the rating the more energy efficient the home is and the lower the fuel bills will be.

Whilst every effort is made to ensure the accuracy of these details, it should be noted that the measurements are approximate only. Floorplans are for representation purposes only and prepared according to the RICS Code of Measuring Practice by our floorplan provider. Therefore, the layout of doors, windows and rooms are approximate and should be regarded as such by any prospective purchaser. Any internal photographs are intended as a guide only and it should not be assumed that any of the furniture/fittings are included in any sale. Where shown, details of lease, ground rent and service charge are provided by the vendor and their accuracy cannot be guaranteed, as the information may not have been verified and further checks should be made either through your solicitor/conveyance. Where appliances, including central heating, are mentioned, it cannot be assumed that they are in working order, as they have not been tested. Please also note that wiring, plumbing and drains have not been checked.