



Belmont Road, Grays

£1,495 pcm

LET

Ali & Co are delighted to offer this fantastic THREE DOUBLE BEDROOM HOME TO LET which is available to move into immediately.

Available Now | Close To Station | CLOSE TO TOWN | Double Glazing | Gas Central Heating | Three Bedroom Home |

01375 806786

hello@aliandcoproperty.co.uk

Ali&Co
PROPERTY SERVICES

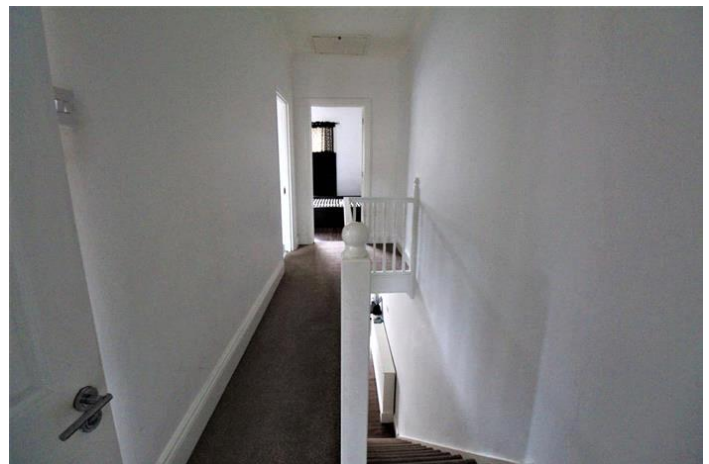
THREE BEDROOM FAMILY HOME

The property offers fantastic accommodation with a spacious lounge, large kitchen, family bathroom, 3 double bedrooms, WC, garden and garage. Laminated flooring throughout, double glazed and gas central heating. Located in a great area being a short walk to Grays Town Centre providing great facilities and local to all amenities.

Call to book a viewing today.

Council Tax Band: B (Thurrock Council)

Deposit: £1,495







Energy Efficiency Rating		
	Current	Potential
Very energy efficient - lower running costs		
(92-100) A		
(81-91) B		88
(69-80) C	72	
(55-68) D		
(39-54) E		
(21-38) F		
(1-20) G		
Not energy efficient - higher running costs		
England & Wales	EU Directive 2002/91/EC	

The energy efficiency rating is a measure of the overall efficiency of a home. The higher the rating the more energy efficient the home is and the lower the fuel bills will be.

Whilst every effort is made to ensure the accuracy of these details, it should be noted that the measurements are approximate only. Floorplans are for representation purposes only and prepared according to the RICS Code of Measuring Practice by our floorplan provider. Therefore, the layout of doors, windows and rooms are approximate and should be regarded as such by any prospective tenant.