



## Kent Road, Grays

£1,800 pcm

**LET**

Ali & Co are delighted to present this fantastic 5 BEDROOM FAMILY HOME which is newly refurbished throughout.

Located within a easy reach of Grays Town Centre and transport.

Close to schools | Close To Station | Gas Central Heating | Landscaped Garden | New bathroom | New Kitchen | Newly Carpeted | Newly Refurbished | Two Bathrooms | FIVE BEDROOM HOUSE |

**01375 806786**

hello@aliandcoproperty.co.uk

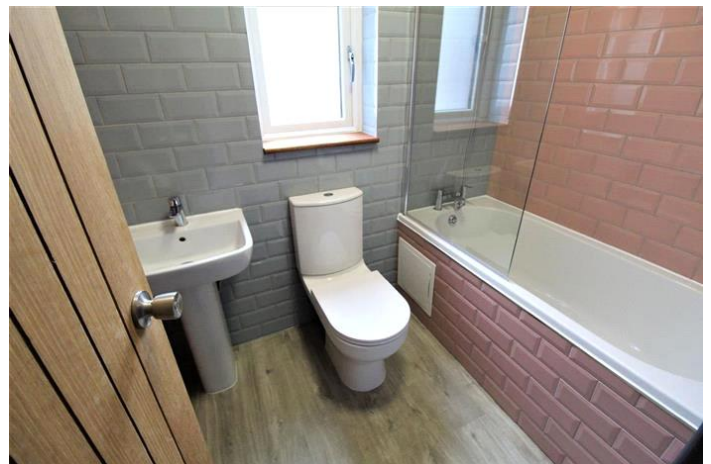
**Ali&Co**  
PROPERTY SERVICES

## FIVE BEDROOM FAMILY HOME

Ali & Co are delighted to present this fantastic 5 Bedroom house which is newly refurbished throughout. Located within a easy reach of Grays Town Centre and transport. The property offers excellent accommodation with two double and three single bedrooms, two bathrooms, downstairs wc, kitchen, dinning and lounge. landscaped garden. Available to move immediately.

Call Ali & Co to arrange a viewing.

Council Tax Band: B (Thurrock Council)  
Deposit: £1,800







Energy Efficiency Rating		
	Current	Potential
Very energy efficient - lower running costs		
(92-100) <b>A</b>		
(81-91) <b>B</b>		<b>85</b>
(69-80) <b>C</b>		
(55-68) <b>D</b>	<b>70</b>	
(39-54) <b>E</b>		
(21-38) <b>F</b>		
(1-20) <b>G</b>		
Not energy efficient - higher running costs		
<b>England &amp; Wales</b>	EU Directive 2002/91/EC	

The energy efficiency rating is a measure of the overall efficiency of a home. The higher the rating the more energy efficient the home is and the lower the fuel bills will be.

Whilst every effort is made to ensure the RICS accuracy of these details, it should be noted that the measurements are approximate only. Floorplans are for representation purposes only and prepared according to the RICS Code of Measuring Practice by our floorplan provider. Therefore, the layout of doors, windows and rooms are approximate and should be regarded as such by any prospective tenant.